



1496HC

QUICK-TACH TELEHANDLER BUCKET

RENT OR SALE



www.atsequipment.com

HEAVY DUTY, HIGH-CAPACITY 2.0 CUBIC YARD

The Star Industries 1496HC is a high-capacity, 95-inch wide telehandler bucket with a 2.0 cubic yard capacity, designed for heavy-duty material handling. It typically weighs approximately 1,290-1,310 lbs, is engineered for direct quick-tach, and features robust steel construction.

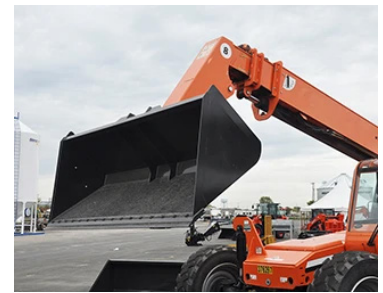


Key Specifications

- Capacity:** 2.0 Cubic Yards
- Width:** 95 Inches
- Weight:** 1,290-1,310 lbs
- Style:** High-Capacity Quick-Tach or Slip-on-the-Forks
- Construction:** Heavy-duty steel designed for telehandlers, with optional 5/8" x 8" bolt-on blade.
- Fork Pockets (Slip-on Model):** 48" long x 7 3/4" x 3" ID, centered at 38".
- Compatibility:** Fits most major telehandlers including Skytrak, JLG, Genie, JCB, and Pettibone.

Key Features

- High-Capacity Design:** Deeper, high-capacity design meant to handle larger volumes.
- Quick-Tach Efficiency:** Direct pin-on models reduce weight by 700-1,000 lbs compared to using carriage-mounted buckets, allowing higher lifting capacities.
- Closed Pocket Ends:** Slip-on models feature closed pocket ends for better stability



ATS EQUIPMENT INC. Construction Equipment & Supplies Rentals • Sales • Service

BOSTON, MA
(617) 825-3600

AUBURN, MA
(508) 832-8500

REHOBOTH, MA
(508) 379-6200

CANDIA, NH
(603) 483-2100