

# SKYJACK™

## SJ843 TH

### TELEHANDLERS

AVAILABLE FOR  
RENT OR SALE



### EASILY SERVICEABLE

Skyjack telehandlers extend our principle of simple reliability into material handling equipment. Our TH series is designed with all major service points easily accessible, limiting downtime and increasing our customers' utilization. With a variety of proprietary features, Skyjack's TH series offer the rental industry's best life cycle value.

### SMARTORQUE™

Using an optimized balance of engine horse power, torque, and hydraulic performance, Skyjack SMARTORQUE™ products deliver the same on-site job performance as higher power units - providing excellent performance with less engine horsepower. Less emission controlling components avoids the cost associated with their complexity, as well as the time and inconvenience required in maintaining them. SMARTORQUE™ means no Diesel Particulate Filter (DPF), no Diesel Exhaust Fluid (DEF)/AdBlue, and no other active exhaust after treatment.

### SPECIFICATIONS

Overall Width	8' 5"
Ground Clearance	19"
Turning Radius (Inside)	147"
Fuel Tank	35.7 gal.
Hydraulic Reservoir	43.85 gal.
Maximum Lift Capacity	8,000 lbs
Maximum Lift Height	43' 4"
Maximum Forward Reach	28' 7"
Rated Lift Capacity @ Maximum Height	6,000 lbs
Rated Lift Capacity @ Maximum Reach	1,900 lbs
O/A Length - Less Forks	19' 6"
Overall Height - Stowed	7' 11"
Operating Weight	23,006 lbs
Engine	74hp / 221 lb-ft Deutz TCD 2.2L T4F
Max Travel Speed - Forward	17mph
Transmission	Dana Powershift, 3 Speeds F/R
Axles	Dana
Steering	3 mode (Front Wheel, 4 Wheel, Crab)
Tires	Foam Filled 13 x 24 16PR Grip Lug
Drawbar Pull	17,750 lbs



**ATS EQUIPMENT INC.**    **Construction Equipment & Supplies**    **Rentals • Sales • Service**

**BOSTON, MA**  
**(617) 825-3600**

**AUBURN, MA**  
**(508) 832-8500**

**REHOBOTH, MA**  
**(508) 379-6200**

**CANDIA, NH**  
**(603) 483-2100**

**SKYJACK™**

# SJ843 TH

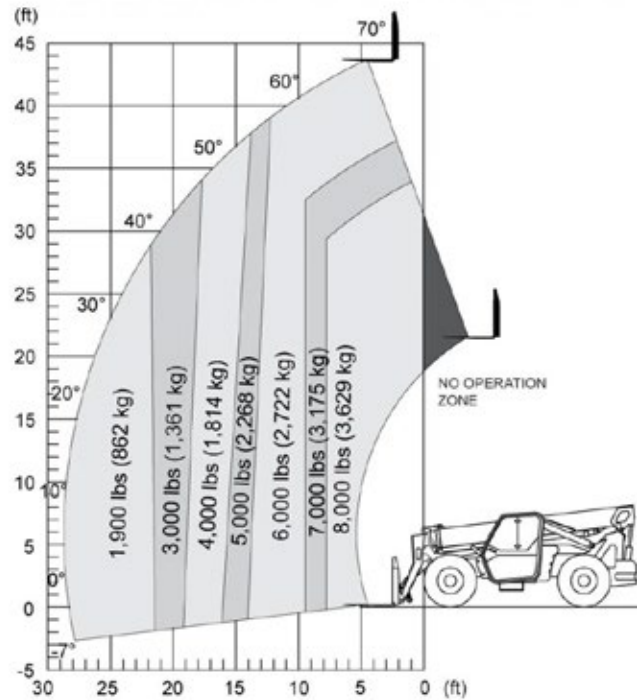
**TELEHANDLER**

**AVAILABLE FOR  
RENT OR SALE**



[www.atsequipment.com](http://www.atsequipment.com)

SPECIFICATIONS	SJ843 TH
Maximum Lift Capacity	8,000 lbs
Maximum Lift Height	43' 4"
Rated Lift Capacity @ Maximum Height	6,000 lbs
Maximum Forward Reach	28' 7"
Rated Lift Capacity @ Maximum Reach	1,900 lbs
O/A Length - Less Forks	19' 6"
Overall Height - Stowed	7' 11"
Overall Width	8' 5"
Ground Clearance	19"
Turning Radius - Outside	147"
Operating Weight	23,006 lbs
Engine	74 hp / 221 lb-ft Deutz TCD 2.2L T4F
Max Travel Speed - Forward	17mph
Drawbar Pull	17,750 lbs
Transmission	Dana Powershift, 3 speeds F/R
Axles	Dana
Steering	3 mode (Front Wheel, 4 Wheel, Crab)
Tires	Foam-Filled 13 x 24 16PR Grip Lug
Fuel Tank Capacity	35.7 gal.
Hydraulic Reservoir	43.85 gal.



**ATS EQUIPMENT INC. Construction Equipment & Supplies Rentals • Sales • Service**

<b>BOSTON, MA</b> <b>(617) 825-3600</b>	<b>AUBURN, MA</b> <b>(508) 832-8500</b>	<b>REHOBOTH, MA</b> <b>(508) 379-6200</b>	<b>CANDIA, NH</b> <b>(603) 483-2100</b>
--	--	--	--