

Pettibone Forklift

AVAILABLE FOR RENT AT



www.atsequipment.com



T8044

TRAVERSE LIFT SERIES

ATS EQUIPMENT INC. Construction Equipment & Supplies Rentals • Sales • Service

**BOSTON, MA
(617) 825-3600**

**AUBURN, MA
(508) 832-8500**

**REHOBOTH, MA
(508) 379-6200**

**CANDIA, NH
(603) 483-2100**

Pettibone T8044

ATS EQUIPMENT INC.
www.atsequipment.com

Traverse Lift Series

Dimensions

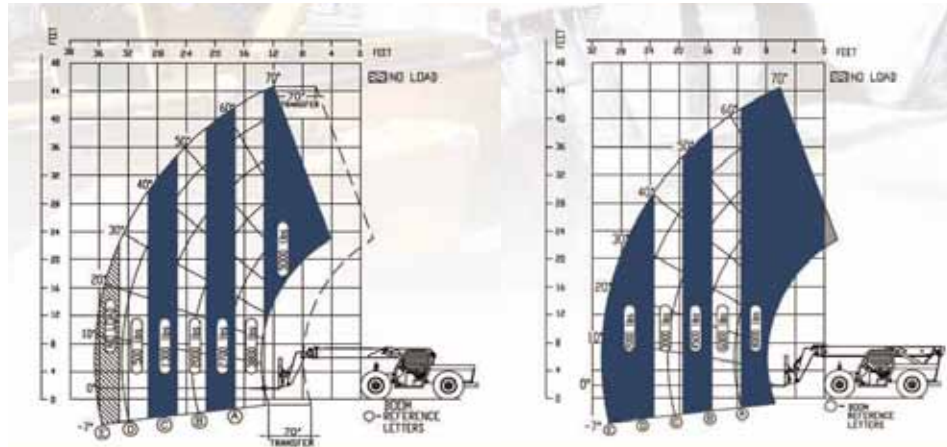
Height
95.5" (2.43 m) Boom Down

Length
22' (6.71 m) to Fork Frame

Width
102" (2.59 m)

Ground Clearance
21" (0.53 m)

Curb Weight (approximate)
27,575 lbs (12,508 kg)



Performance

Maximum Lifting Capacity
- 8,000 lbs (3,629 kg)

Maximum Lift Height
- 44' 6" (13.59 m)

Maximum Forward Reach
- 36' 1" (11.00 m) (at 24" Load Center)

Below Grade Reach
- 3' 1" (0.94 m)

Maximum Travel Speed
- 20 mph (32 km/h)

Frame
- 24° of Leveling (12° right and left)
- Rear Axle Stabilization System
- Fits Under 8' (2.44 m) Doorway

Turning Radius
- 12' 6" (3.81 m)

Standard Equipment

Engine
- Cummins 110 hp Tier III Turbo Diesel
with Electronic Control and Protection
- 34.75 Gallon (131.54 L) Fuel Tank

Transmission
- Fully Modulated Carraro Powershift
- Four Speed Forward and Reverse
- Parking Brake Engaged Transmission
Declutch

Axles
- Four-wheel Drive
- Carraro Outboard Planetary Axles

Steering
- Four-wheel, Two-wheel, and Crab Steer

Brakes
- Oil-Immersed, Inboard Disc Service Brakes
- Integral Park Brake

Tires
- 13:00 x 24, 14 ply

Boom
- Automatic Fork Leveling Without Slave
Cylinders
- Two Wide-stance, Heavy-duty Lift Cylinders

Cab
- Unmatched Visibility
- Adjustable Suspension Seat with Seat Belt
- Fully Adjustable Right-side Arm Rest
- Full Set of Gauges for Instant Machine
Status

Transfer
- 70" (1.78 m) of Horizontal Boom Travel

Hydraulics
- Piston Pump
- Rapid Response Hydraulic System
- Auxiliary Boom Tip Hydraulics
- Quick Disconnect for Attachments

Attachment
- 48" (1.2 m) Standard Fork Carriage

Warranty

- 2 year/2,000 hour

Optional Attachments

- Pallet, Lumber and Block Forks
- Side Tilt Carriages ±10°
- Truss Boom
- Utility Buckets
- Additional Attachments Available

Optional Equipment

- GPS Equipment Management System
- Light Packages
- Foam Filled Tires
- Enclosed Cab (HWD)
- Additional Options Available

ATS EQUIPMENT INC. Construction Equipment & Supplies Rentals • Sales • Service

BOSTON, MA
(617) 825-3600

AUBURN, MA
(508) 832-8500

REHOBOTH, MA
(508) 379-6200

CANDIA, NH
(603) 483-2100